



GOOD MORNING
Have Good Trading Day

FRIDAY



Price is what you pay.
Value is what you get.

- Warren Buffet



MARKET PULSE

INDIAN INDICES

NAME	CMP	NET CH.	%
SENSEX	24338	+115	+0.48
NIFTY	7404	+42	+0.57

INDIAN ADR'S

SYMBOL	CLOSE	GAIN/ LOSS %
DRREDDY	44.55	+0.43
HDFCBANK	58.89	+1.19
ICICIBK	6.11	+2.17
INFY	17.84	+1.08
TATAMOTOR	24.69	+1.94
WIPRO	11.92	+1.27

FII AND MF ACTIVITY

SYMBOL	In Crs.
FIIs Eq (Provisional)	-195.92
FIIs Index Future	890.11
FIIs Index Options	579.28
FIIs Stock Future	30.05
FIIs Stock Options	2.23
DII's Eq (Provisional)	476.44

CURRENCY

RBI RATE	04-FEB-2016
RUPEE - \$	67.8093
EURO	75.1327
YEN 100	57.4200
GBP	98.7914

MARKET PULSE

GLOBAL INDICES

NAME	CMP	NET CH.	%
DOW	16416	+79	+0.49
NASDAQ	4509	+5	+0.12
NIKKEI	16791	-253	-1.49
HANG SENG	19233	+49	+0.26
SGX NIFTY	7443	-1	-0.01

WORLD COMMODITIES

FUTURE	U\$\$	CHANGES
CRUDE	31.72	Unch
NATURAL GAS	1.987	+0.015
GOLD	1156.3	-1.2
SILVER	14.875	+0.025
COPPER	2.1125	-0.0190

WORLD EVENTS

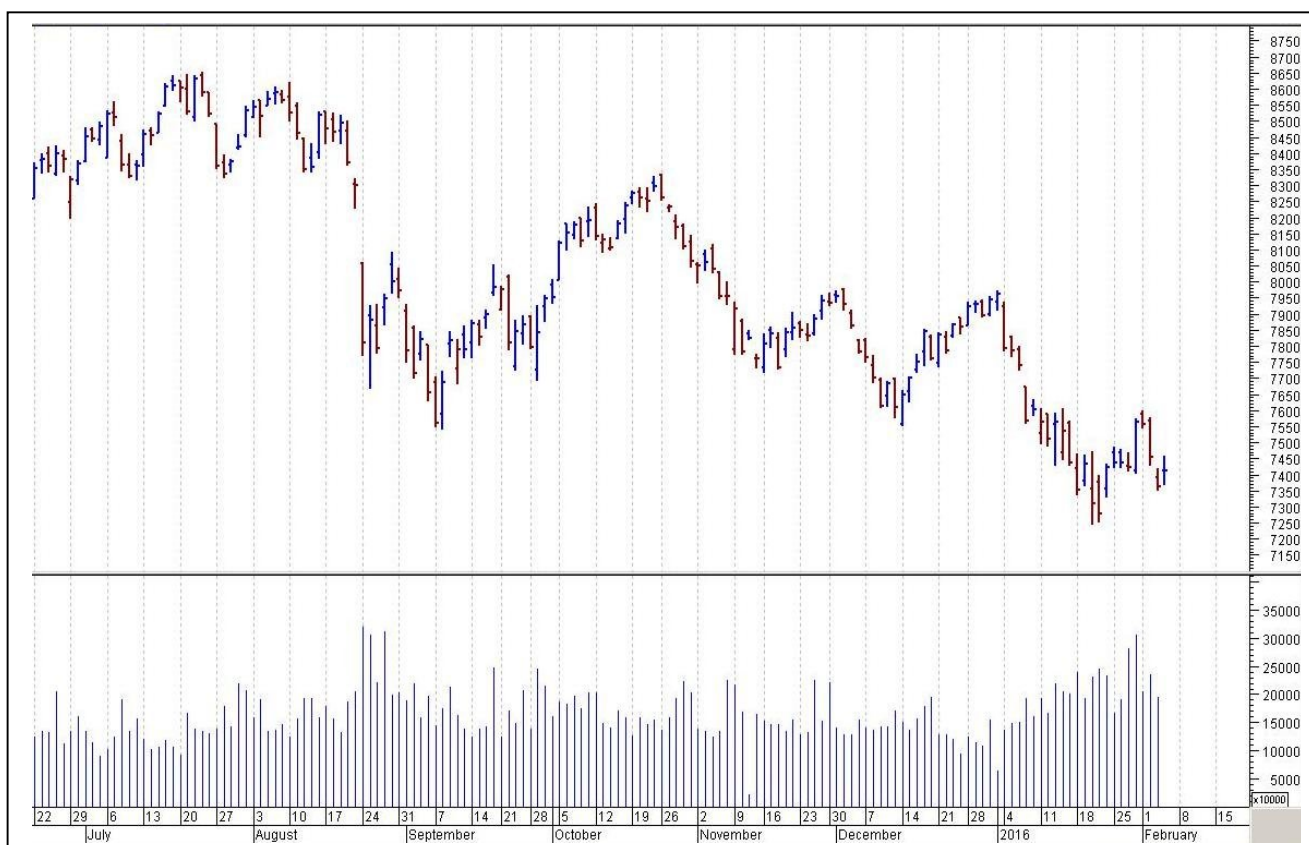
- US: Average Hourly Earnings m/m
- Non-Farm Employment Change
- Unemployment Rate
- UK: NIL

TOP STORY

- Tata Steel Q3 Cons Net Loss At `2,127 Cr Vs `157.1 Cr Profit (YoY) Cons Total Income At `28,039 Cr Vs `33,633.2 Cr (YoY)
- Rel Infra Sells Cement Business To Birla Corporation For `4,800 Cr. Proceeds To Be Utilised For Debt Reduction
- Astra Microwave: To Form JV With Unique Broadband For Broadcasting & Medical Imaging Biz Initial Invst Will Be \$0.1 m; Expect To Do Biz Of \$50-70 m In 5-7 Years
- Govt To Auction Three Ultra Mega Power Projects With An Investment Of `80,000 Cr By March
- Nitin Fire To Sell/Transfer All Or Part Of The Shares In UAE Arm
- Fin Tech Completes 14.3% Stake Sale In Dubai Multi Commodities Centre
- Electrosteel Sets Up \$6.6 m Warehouse In Bahrain: PTI
- Jet Airways Looking At Expanding Operations To Hong Kong: PTI



NIFTY CHART



MARKET COMMENTARY

The market ended higher after wild swings after the Nifty re-conquered 7400 on short-covering. The Nifty was up 42.20 points or 0.6 percent at 7404. The Sensex was up 115.11 points or 0.5 percent at 24338.43. About 1074 shares advanced, 1571 shares declined, and 126 shares were unchanged. European markets push and rising oil also boosted market sentiments today. Brent crude stabilised near USD 35 a barrel. For today's trade Nifty likely to trade in the range between 7425 – 7500 in the upper side and 7380 – 7280 in the lower side.

MARKET LEVELS

	CMP	SUPPORT LEVELS				RESISTANCE LEVELS			
NIFTY	7404	7380	7350	7320	7280	7425	7450	7475	7500
USDINR	67.8300	67.78	67.70	67.62	67.55	67.90	67.96	68.05	68.12



FUTURES CORNER

SCRIPS	CLOSE	SUPPORT	TARGET		REMARKS
		STOP LOSS	T1	T2	
NMDC	80	78.20	82	84	TRADING CALL
AXISBANK	384.55	380	389	395	TRADING CALL

EQUITY CORNER

SCRIPS	CLOSE	SUPPORT	TARGET		REMARKS
		STOP LOSS	T1	T2	
NELCAST	61.50	60	63.50	66	TRADING CALL
KWALITY	100.50	102.80	97.50	95	TRADING CALL

DELIVERY BASED CALL / INVESTMENT CALL

SCRIPS	CMP	SUPPORT	TARGET		REMARK
		STOP LOSS	T1	T2	

BULK DEALS (BSE)

SCRIP	CLIENT NAME	BUY/SELL	QUANTITY	PRICE
NIL				

BULK DEALS (NSE)

SCRIP	CLIENT NAME	BUY/SELL	QUANTITY	PRICE
ANGIND	GUNVANTI P KOTAK	BUY	83000	44.45
SANCO	MINSHI CREATION PRIVATE LIMITED	BUY	104000	36.5
SANCO	CHP FINANCE PVT LTD	SELL	296000	36.5

SCRIP'S IN F&O BAN

(To resume for normal trading below 80% of market wide limit required)

NIL



NIFTY 50 STOCKS: SUPPORT & RESISTANCE						
Symbol	Close	Support 1	Support 2	Pivot Point	Resistance1	Resistance2
ACC	1270	1257	1243	1267	1281	1291
ADANI PORTS	216	212	209	215	219	221
AMBUJACEM	196	193	191	195	198	199
ASIANPAINT	889	871	852	883	902	914
AXISBANK	383	375	368	381	388	394
BAJAJ-AUTO	2311	2274	2237	2332	2369	2427
BANKBARODA	123	121	119	123	125	127
BHARTIARTL	304	302	300	304	306	308
BHEL	130	127	125	129	132	134
BOSCH LTD	16979	16754	16528	16935	17161	17342
BPCL	832	820	808	836	848	864
CAIRN	123	120	117	123	126	128
CIPLA	550	537	523	554	567	584
COALINDIA	323	319	316	321	325	327
DRREDDY	3009	2969	2930	3009	3048	3088
GAIL	355	345	335	357	367	378
GRASIM	3433	3406	3378	3431	3459	3485
HCLTECH	867	853	838	864	878	890
HDFC	1168	1162	1156	1170	1176	1183
HDFCBANK	1049	1045	1041	1050	1054	1059
HEROMOTOCO	2514	2481	2448	2505	2537	2561
HINDALCO	69	67	66	69	70	72
HINDUNILVR	835	821	808	830	843	852
ICICIBANK	204	201	198	204	207	210
IDEA	100	98	95	101	104	108
INDUSINDBK	913	905	897	912	920	926
INFY	1180	1162	1143	1178	1196	1213
ITC	322	320	319	322	324	326
KOTAKBANK	676	670	663	675	682	687
LT	1136	1119	1103	1135	1151	1166
LUPIN	1653	1607	1560	1663	1709	1766
M&M	1205	1188	1172	1205	1221	1238
MARUTI	3795	3752	3709	3817	3860	3925
NTPC	126	123	121	127	130	134
ONGC	220	217	215	219	222	223
PNB	91	90	88	91	92	93
POWERGRID	147	144	141	146	149	150
RELIANCE	973	959	945	980	994	1015
SBIN	163	159	155	164	168	174
SUNPHARMA	836	820	804	834	850	864
TATAMOTORS	326	321	317	325	329	333
TATAPOWER	59	58	56	59	60	61
TATASTEEL	226	220	215	225	230	234
TCS	2420	2401	2383	2421	2439	2459
TECHM	469	463	457	471	477	485
ULTRACEMCO	2770	2746	2722	2779	2803	2836
VEDL	68	64	61	67	70	72
WIPRO	560	555	550	558	563	566
YESBANK	759	746	733	767	780	801
ZEEL	399	393	387	402	409	418



CORPORATE ACTION / BOARD MEETINGS

NSE Download Ref.No.:NSE/CML/31635:- ESSAROIL will be suspended from trading w.e.f February 10, 2016 on account of Voluntary delisting

NSE Download Ref.No.:NSE/SURV/31633:- Max India Limited (MAX) shall be transferred from trade for trade Segment (series: BE) to rolling segment (series: EQ) w.e.f, February 10, 2016 (Wednesday).

NSE Download Ref.No.:NSE/SURV/31657:-Jindal Stainless (Hisar) Limited (JSLHISAR) shall be transferred from trade for trade segment (series: BE) to rolling segment (series: EQ) with effect from February 11, 2016 (Thursday).

NSE Download Ref.No.:NSE/CML/31672:- Trading in Equity Shares of Elder Pharmaceuticals Limited and Era Infra Engineering Limited will be suspended w.e.f February 25, 2016 on account of non-compliance with Clause 41 of the Listing Agreement

BOARD MEETINGS

COMPANY NAME	DATE	PURPOSE	RS. PER SH.
IIFL	5-Feb-16	Dividend	4.25
MPSLTD	5-Feb-16	Dividend	8
GAEL	5-Feb-16	Dividend	0.8
NTPC	5-Feb-16	Dividend	1.6
MARICO	5-Feb-16	Dividend	1.5
CONCOR	5-Feb-16	Dividend	8
VRLOG	8-Feb-16	Dividend	5
VIPIND	8-Feb-16	Dividend	0.6
TCI	8-Feb-16	Dividend	0.6
SHANTIGEAR	8-Feb-16	Dividend	0.5
GRANULES	8-Feb-16	Dividend	0.15
WENDT	9-Feb-16	Dividend	10
KPRMILL	9-Feb-16	Dividend	5
CHOLAFIN	9-Feb-16	Dividend	2.5
NCLIND	9-Feb-16	Dividend	1
AVTNPL	9-Feb-16	Dividend	0.2
SUNDARMFN	9-Feb-16	Dividend	4.5
APTECHT	10-Feb-16	Dividend	
INDNIPPON	10-Feb-16	Dividend	4
GDL	10-Feb-16	Dividend	
HAVELLS	10-Feb-16	Dividend	
SHREECEM	10-Feb-16	Dividend	12

NEWS & RUMOURS:

- Gold (Spot Dollar) major support = \$1123/\$1089 & Resistance = \$1170/\$1197.
- Crude oil range->\$27 to \$37.
- U.S. Stocks Rise as Sliding Dollar Boosts Crude to Copper: - Crude oil climbed above \$33 a barrel and copper rallied as the dollar's slide worsened on speculation global growth may not be strong enough to warrant further central-bank tightening. Commodities producers led U.S. stocks higher.
- Dollar Erases All New Year Rally as Traders Face Fed Reality: - The dollar posted its biggest two-day drop since March, extending a decline that's wiped out its rally at the start of the year.
- Natural gas futures extend losses after U.S. storage data disappoints: - U.S. natural gas futures were sharply lower on Thursday, extending losses after data showed U.S. natural gas supplies in storage fell less than expected last week.
- Oil prices rally again in volatile trade as dollar selloff continues: - Oil prices rallied again in North America trade on Thursday, one day after soaring 8% on the back of a broadly weaker U.S. dollar and amid ongoing rumors about a potential deal between Russia and OPEC to cut a global supply glut.
- Gold jumps above \$1,150 as U.S. dollar collapses to 3-month low: - Gold futures rallied to the highest level since late-October on Thursday, as the U.S. dollar collapsed amid growing skepticism over the Federal Reserve's ability to raise interest rates as much as it would like this year.
- Industrial metals benefited from a drop in the U.S. currency that makes dollar-denominated commodities cheaper for investors. Aluminum for delivery in three months climbed to the highest this year on the LME, and lead advanced for the eighth day in a row, the longest run since June 2014.

TRENDS & OUTLOOK – DATE: 05- Feb- 2016

PRECIOUS METALS:

COMMDITY (MCX)	S2	S1	PIVOT POINT	R1	R2
GOLD (Apr)	26850	27120	27340	27610	27966
SILVER (Mar)	33100	34500	35750	37200	38500

BASE METALS

COMMDITY (MCX)	S2	S1	PIVOT POINT	R1	R2
COPPER (Feb)	307	312	318	323	327
ZINC (Feb)	110.50	113.20	116.10	118.20	120.40
LEAD (Feb)	117.70	120.20	122.70	125.55	128.10
NICKEL (Feb)	545	561	581	594	609

ENERGY

COMMDITY (MCX)	S2	S1	PIVOT POINT	R1	R2
CRUDE OIL (Feb)	2001	2091	2210	2325	2424
NATURAL GAS (Feb)	124	131	136	141	147

DATE TALKS : TODAY'S ECONOMIC DATA :

RBA Monetary Policy Statement, Average Hourly Earnings, Non-Farm Employment Change, Unemployment Rate, Average Hourly Earnings, Non-Farm Employment Change, Unemployment Rate, Trade Balance.



Registered Office

Indira House, 3rd Floor, 5 Topiwala Lane,
Opp. Lemington Road Police Station, Grant Road (East), Mumbai - 400007.

Corporate Office

'Ramavat House' E-15, Saket Nagar, Indore - 452018 (M.P.)

Customer Care

Tel: +91-731-4097170/ 71/ 72/ 73/ 74 M. +91 93031 72345

Email: customercare@indiratrade.com www.indiratrade.com



INSTITUTIONAL DEALING UNIT

Africa House, 5, Topiwalla Lane, Lamington Road, Mumbai, 400007

Tel: +91 22 30080678 Fax : +91 22 23870767 Email : ie@indiratrade.com

Disclaimer

This report is for private circulation within the Indira Group. This report is strictly confidential and for information of the selected recipient only and may not be altered in any way, transmitted to, copied or distributed, in part or in whole, to any other person or to the media or reproduced in any form. This report should not be construed as an offer or solicitation to buy or sell any securities or any interest in securities. It does not constitute a personal recommendation or take into account the particular investment objectives, financial situations, or any such factor. The information, opinions estimates and forecasts contained here have been obtained from, or are based upon, sources we believe to be reliable, but no representation of warranty, express or implied, is made by us to their accuracy or completeness. Opinions expressed are our current opinions as of the date appearing on this material only and are subject to change without notice.